

Enterprise Risk Management

Work smarter, not harder. Resolver's ERM software eliminates the paper chase, so you can focus on delivering actionable insights.



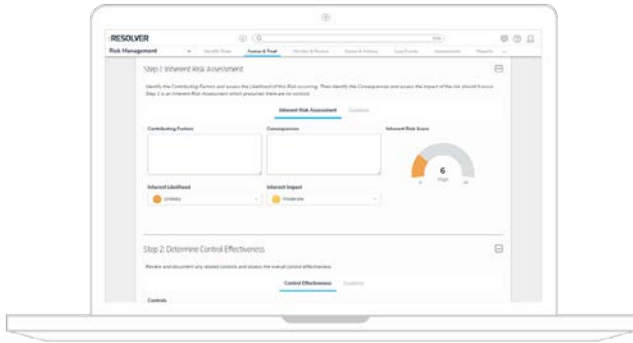
Aligned to Globally Accepted Risk Management Principles

Let's be honest, risk management can be subjective. Resolver's ERM application is aligned to internationally recognized frameworks, including ISO 31000 and COSO ERM, to standardize risk management. With consistency across the entire organization and simplified processes, you'll enable a risk culture that delivers actionable data and insight.

Identify Risks

Risk managers and owners can easily manage their risk environment by adding, updating and describing risks that might impact the achievement of organizational goals, including possible causes and consequences.



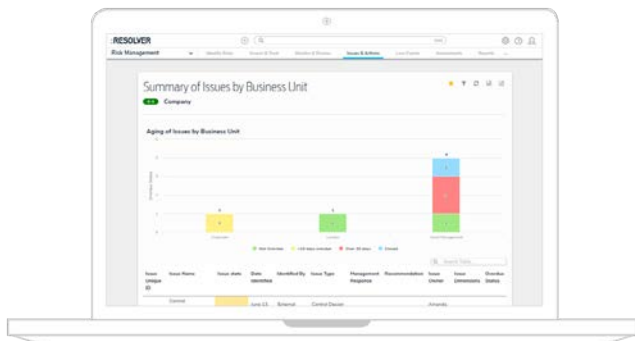
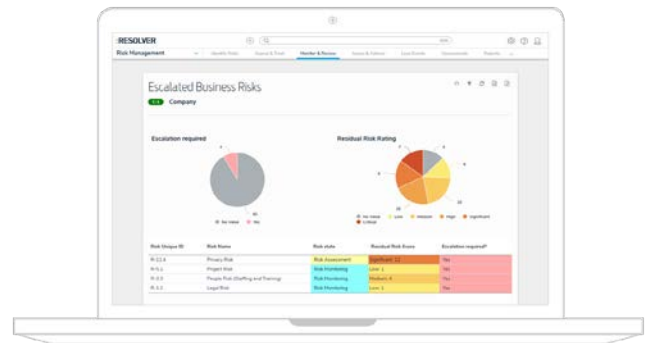


Assess and Treat

Easily capture and document risk assessments across all functions or business units, with automated workflows to notify risk owners when an evaluation is due or pending.

Monitor and Review

Set risk tolerances globally or locally and send automated alerts when a KRI has been breached. Real-time reports, dashboards, and metric monitoring provide instant visibility into the organization's risk environment.



Issues and Actions

Activate mitigation plans when an issue has been identified including assigning a task owner, managing progress and due dates. Understand the issues across business units, regions, departments or products, to easily identify the root cause and prioritize decision making.

Board-Ready Reporting

Create meaningful, real-time risk reports, heat maps and dashboards, with a filterable view of risks, assessment data, controls, locations, loss events and more – all exportable at the click of a button.





No More Hand Holding

Resolver's ERM software is simple to use, which means you don't have to train your staff to use a new platform. Simply schedule emails to remind your team to log in and effortlessly submit risk assessments.



Single Source of Truth

Connect the compliance, audit and risk functions together in a single platform for improved collaboration. Bridge the gap between silos with a tool that makes it easy to collect, escalate and report on risk data.



With Great Adoption Comes Great Insight

In-app guidance and configurable forms make it easy for the end-user to input up-to-date risk information. With quality inputs, you'll have access to accurate, timely data that drives actionable insight.



Board-Ready Reporting

Create meaningful and real-time risk reports, heat maps and dashboards, with a filterable view of risks, assessment data, controls, locations, loss events and more – all exportable at the click of a button.

Why Resolver?

Getting Started

Effective risk management requires more than just software. Resolver has partnered with third-party advisors across the globe to ensure you have the processes and culture needed to successfully leverage risk management software..

Implementation

Simply transfer your pre-existing data to get started. Our Professional Services team works closely with you to support your implementation, customization, onboarding and user training, for a smooth and successful deployment.

24/7 Support

Once you go live, you'll have access to Resolver's Customer Portal and 24/7 product support. Give us a call, send an email or open a support ticket whenever you have questions or technical difficulties.

As You Grow

You'll be assigned a Customer Success Manager who partners with you to ensure that you get the most out of the software, as well as connects with you a network of users and risk management professionals worldwide.



How Resolver Can Help

Resolver helps our customers become secure and resilient; ready to respond to every threat and opportunity. We do this by enabling them to manage both risk and security across the enterprise in a single solution. Our intuitive integrated risk management software for mid to large-sized organizations includes solutions for risk management, corporate security, business resilience and IT risk. Resolver enables these teams to drive user adoption, share data more effectively, streamline operations and provide more actionable insights throughout the organization.

Want to learn more? Let's talk.

resolver.com | info@resolver.com | 1-888-891-5500